



# Nautech

YACHT, SUPERYACHT, TECHNOLOGIES AND DESIGN



**besenzoni**  
LUXURY YACHT SOLUTIONS

- GANGWAYS
- CRANES
- HELM SEATS
- LADDERS
- HYDRAULIC PLATFORM
- TABLE BASES
- CARBON LINE
- CUSTOM MADE

[www.besenzoni.it](http://www.besenzoni.it)



Shipyard Vision  
**Mark Richards:**  
Efficiency is my job  
Grand Banks Yachts

Technology  
**Canopée, 121 metres**  
long ship  
sail assisted

Materials  
**The important**  
is to the  
environment



**tecniche nuove**  
[www.tecnichenuove.com](http://www.tecnichenuove.com)

# RIVIERA GENOVA, its history

by our staff

RIVIERA GENOVA WAS FORMED IN 1976 AS A SPLIT-OFF FROM ANOTHER COMPANY (ISOLANPLAST) TO DEVELOP PRODUCTS FOR THE YACHTING SECTOR AND IT PRODUCES, THE FIRST IN THE WORLD TO DO SO, MAGNETIC COMPASSES ENTIRELY IN PLASTIC FOR YACHTS

**R**iviera compasses are historically the company's "must" product but it's not generally known that the company has always been active in designing and making yachting accessories rigorously in high-quality plastic, debunking the prejudice about the strength of this kind of material.

All Riviera's plastic products are designed and made by an internal office with 3-D CAD stations for designing moulds directly on 3-D models. The company also has a mould workshop with work centres, EDM, grinders, lathes and milling machines and a pressing department with 24 numerically controlled presses from 35 to 300 tonnes and a metrological laboratory.

Pressing of plastic materials is carried out internally through the mother company Isolanplast. Isolanplast was set up much earlier, in 1962, by the entrepreneur Luigi Cocino whose intuition led him to enter the emerging sector of transformation of plastic materials.

In the 1980s, after acquiring Bosch, a company of great importance in industrial automation, as a client, Isolanplast increasingly developed its competences in precision technical articles and took on a typically industrial profile. In the 1990s it entered the automotive sector thanks to working for Bitron, a market leader in supplies for the main world automotive producers. In 1996 it became one of the first Italian family companies to have a quality management system, which was very beneficial in terms of organisation and company performance.

## ASTRA, the ceiling mounted compass

The compasses historically the navigation instrument par excellence. Still today, despite the use of more sophisticated electronic instruments, it is a sure aid no self-respecting sailor can do without.

With a broad range of compasses made for installation in any position on board a yacht, Riviera Genova a few months ago launched Astra, the first compass of its kind. It's a new magnetic compass made specially for ceiling mounting. Astra is the result

of years of research and development by the company in the sector of compasses for both yachts and work boats.

The aim was to make a compass with particular installation that could unclutter the bridges of boats and yachts, which were invaded by electronic instruments, monitors and various indicators of all kinds. From here came the "inverted" compass to be installed on the ceiling. The project was developed starting from Riviera compass models with a proven record of operation, making

**Riviera compasses are historically the company's "must" product but it's not generally known that the company has always been active in designing and making yachting accessories rigorously in high-quality plastic**

changes and improvements to refine the product. For example, the double axis system of the Rose improves stability of reading without need for balancing independently of the various terrestrial magnetic zones.

The internal mechanism is based on a double gimbal system that neutralises rolling and pitching of the boat so they do not interfere with the correct working of the compass.

The transparent case is in polycarbonate, a plastic material that resists scratches and shocks. Anti-UV radiation treatment on the case ensures resistance to the effect of solar radiation. The external parts are in ABS, which has exceptional mechanical properties and strength while at the same time offering valuable

aesthetic qualities. It is also resistant to solvents, alcohol and oils and is also treated to resist over time atmospheric and marine agents.

## From compasses to helms

Comfortable, strong and good-looking, the range of Riviera wheels is very high quality. Megol with "leather effect" is used in overprinting for the grip.

The product is appreciated for its soft-touch characteristics and is smooth and harmonious to look at. Depending on the model, the spokes are in stainless steel or in polypropylene with a high breaking strain and excellent temperature resistance. In this case the aesthetics are particularly good thanks to embossing of the mould that made possible a "carbon effect".



Riviera Genova a few months ago launched Astra, the first compass of its kind. It's a new magnetic compass made specially for ceiling mounting



Riviera Genova waterproof marine speakers are some of the few entirely made in Italy. The sound quality is excellent

### Riviera mechanical and hydraulic helms

The mechanical helms are made in Delrin and metal and are designed using the planetary operating principle. They have three satellites that rotate around the own axes and at the same time around the central axis. The planetary system distributes the effort over three teeth of the central gear, subdividing and balancing the stress on the system. In this way the system lasts longer, is more efficient than helms with a single gear and reduces to a minimum the play caused by excessive wear on the components. The helms are thus made entirely with materials that have high



The mechanical helms are made in Delrin and metal and are designed using the planetary operating principle



The range of Riviera wheels is very high quality

mechanical resistance and an unalterable resistance to where and atmospheric agents. The clutch can be adjusted using a knob on the exterior. For hydraulic helms the company offers kits for installation on both inboard and outboard engines. The shaft is in AISI 316 stainless steel while the seven-piston rotor is in steel stop the pumps have a non-return valve, a dustproof seal and different types of O-rings in three different positions to better prevent the risk of oil leaks.

### Waterproof speakers

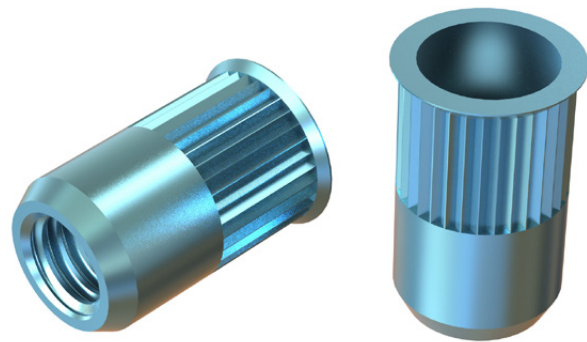
Riviera Genova waterproof marine speakers are some of the few entirely made in Italy. The sound quality is excellent. The range offers three types: flat superthin for those who have space problems, non-magnetic so as not to interfere with electronic instruments on small bridges, and the 200 W top of the range model. The company also makes Bluetooth systems and sub woofers to offer a complete system. Riviera srl Genova, in addition to the product lines mentioned above, also makes a series of other nautical accessories including single and twin dashboard levers and electronic levers compatible with any kind of engine, engine control cables, petrol pipes, fuel pumps and accessories for fitting outboard motors, safety keys for outboard motors and petrol tanks.

## PRODUCTS

### SPECIAL INSERT

## Deform-T: when resistance is lightweight

Specialinsert— leading industrial organisation specialised in the production and sale of fastening systems— introduces Deform-Ti, the deformation threaded tubular rivet fully made of titanium alloy where resistance is lightweight and designed for installation on sheet metal and composite panels. The result of a Research & Development oriented business strategy, Deform-Ti emerges from the evolution of one of Specialinsert's leading products, Deform-Nut, the threaded tubular rivet made of steel, stainless steel and light alloy. With Deform-Ti, the company is introducing a solution able to meet the most stringent industry standards where weight control is as important as the materials' mechanical strength capacity. Technical laboratory tests on the TC M6/TZ insert demonstrate that the titanium alloy rivet (2.1 g/pc) weighs 40% less than a stainless steel one (3.7 g/pc) and is able to withstand a tensile strength of 25.800 N, 27.80 Nm torsion and 6450 N shear strength. These features combined with high rust resistance ensure Deform-Ti's excellent performance, making it the first choice as a partner for the automotive, nautical and chemical industries. Ideal



for applications where there is no possible access from the inside such as tubes, metal sheets and box structures, this system is easy and quick to apply. In fact, it is sufficient to insert Deform-Ti in the previously created hole on the material to be fastened and screw in the specific installation tool on the rivet. The tool will then deform the expansion chamber at the top of the insert, anchoring it to the receiving material. Another plus of Deform-Ti is its extreme versatility: it can be mounted on any type of composite material, even thin, starting from a minimum of 0.5 mm, and on finished parts to be used in any production process phase, guaranteeing the utmost design freedom.



[www.nautechnews.it/v8UBV](http://www.nautechnews.it/v8UBV)

### RIVIERA

## ASTRA, the compass that didn't exist before

Riviera Genova Srl, the leading company in the design and manufacture of nautical accessories and compasses since 1976, is launching ASTRA, the new magnetic compass specially made to be mounted on the ceiling. While maintaining unchanged the seafaring tradition of simplicity and practicality, the magnetic compass is still today an indispensable tool for navigation and saves us risk of malfunction in electronic course control apparatus. "Astra" is the result of years of research and development by the company in compasses for yachts and work boats. The new Astra compass has been designed to satisfy the requirements of shipyards who are continuously seeking to optimise space on the bridge, which is increasingly cluttered with monitors, various indicators and electronic instruments of all kinds. The aim is to exploit unused surfaces, in this case the ceiling of the boat above the bridge. Development of the project started from models of tried and tested Riviera compasses, applying variations and improvements to refine



the product. For example, the double access system of the rose makes reading small stable without the need to balance independently of the different magnetic zones on earth. The internal mechanism is based on a double gimbal system that neutralises rolling and pitching of the boat so they do not interfere with the working of the compass. The materials used are the result years of experience in moulding plastic materials in-house, both for the marine and automotive sectors. The transparent top is in polycarbonate, a plastic material that resists scratches and shocks. The top is treated against ultraviolet rays to ensure resistance to the effects of exposure to the sun. The external parts are in ABS, which has exceptional mechanical properties and strengths while guaranteeing excellent aesthetic quality. It also resists solvents, alcohol and oils and is also treated to resist over time exposure to atmospheric and meteorological agents. The certifications obtained by the company for its products and quality system confirm its constant commitment to seek reliability and high quality in production.

[www.nautechnews.it/3GX9R](http://www.nautechnews.it/3GX9R)

